



SKALPERS

The Skalpers Metalomarão are designed and built to perform specific cuts according to the needs of each project, and also to ensure the good performance of associated equipment.

The equipment is basically composed of grids that can be fixed or adjustable, supported by helical springs on a supporting structure.

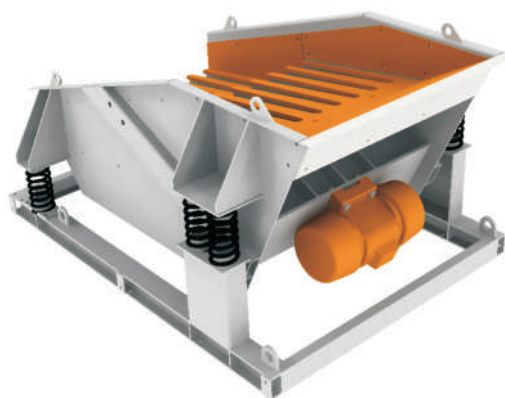
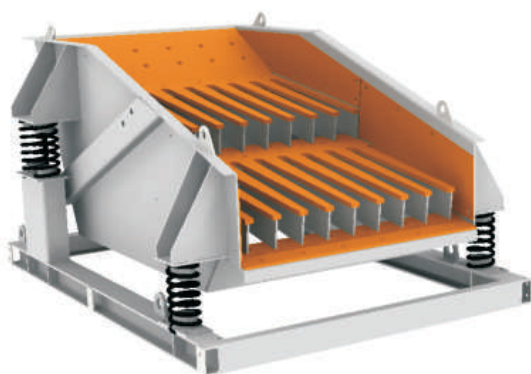
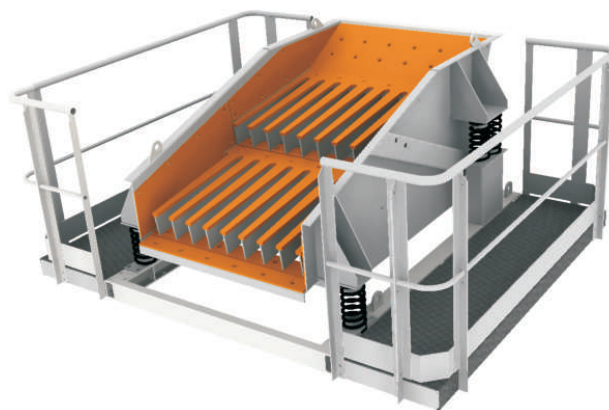
Adjusting the eccentricity of moto-vibrators make these Skalpers highly effective at maximum capacity.

SKALPERS



SKALPERS	Dimensions (mm)	Capacity (t/h)	Power (kW)	Rotation (rpm)	Weight (kg)
SK.20.08	2000x800	80 - 120	2.5	1000	1200
SK.20.12	2000x1200	100 - 200	5	1000	2150
SK.30.15	3000x1500	175 - 350	15	700 - 900	7500

Notes: Other measures on request.



METALOMARÃO
Equipamentos para a indústria extrativa, S.A.

Rua de Mem Gundar, nº1048
Apartado 78
4600-642 Gondar - Amarante | **Portugal**

T +351 255 420 580
F +351 255 420 589

geral@metalomaraao.pt
www.metalomaraao.pt

GPS: Latitude: 41°15'14.93"N
Longitude: 8° 1'56.22"W

E01 | Data: 2015.09

The Metalomarão reserves the right to change characteristics without notice and without any liability. The information included is valid at the edition date of this document.