

## IMPACT CRUSHERS PRIMARY/SECONDARY

The Impact Crushers Metalomarão are characterized by their robustness, versatility, ease of maintenance and reliability.

These Crushers are designed and built for primary and secondary applications, obtaining excellent performances in low abrasive materials. Such as limestone and recycling.

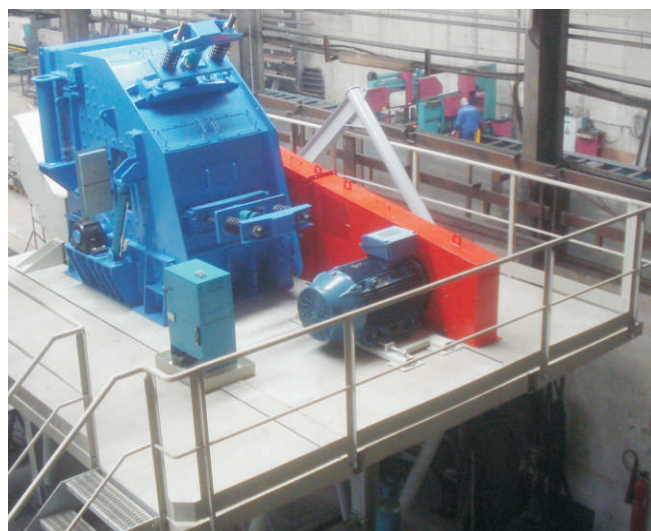
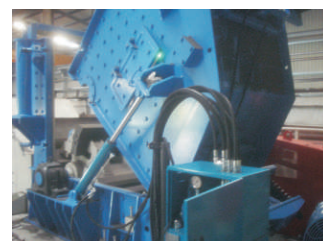
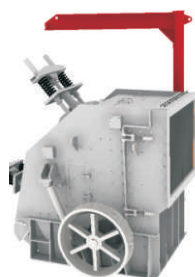
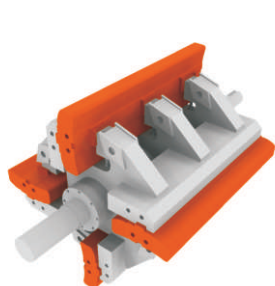
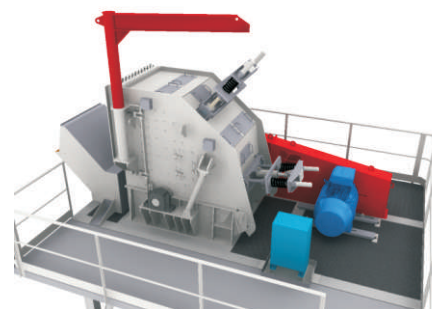
Their performance depends largely on the proper selection and operation of other equipment and/or its circuit elements such as feeders, conveyors, screeners, motors and drive components.

# IMPACT CRUSHERS PRIMARY/SECONDARY



CRUSHERS	Impact Bars	RPM Máx.	Power (kW)	Granulometry Máx. (mm)	Production (t/h)	Weight (kg)
MIP.11.11	4	600	110 - 200	800	150 - 300	12800
MIP.13.13	8	500	132 - 250	900	200 - 400	17500
MIS.08.11	4	750	55 - 90	250	75 - 150	8900
MIS.11.11	4	750	90 - 160	250	120 - 240	13000
MIS.13.13	8	650	132 - 200	300	160 - 300	15300

Notes: Other measures on request.  
Values of production dependent of material.



**METALOMARÃO**  
Equipamentos para a indústria extrativa, S.A.

Rua de Mem Gudar, nº1048  
Apartado 78  
4600-642 Gondar - Amarante | **Portugal**

**T** +351 255 420 580  
**F** +351 255 420 589

geral@metalomarao.pt  
**www.metalomarao.pt**

**GPS:** Latitude: 41°15'14.93"N  
Longitude: 8° 1'56.22"W

E01|Data:2015.09

The Metalomarão reserves the right to change characteristics without notice and without any liability. The information included is valid at the edition date of this document