



IMPACT CRUSHERS Terciary/Quaternary

The Impact Crushers Metalomarão are characterized by their robustness, versatility, ease of maintenance and reliability.

These Impact Crushers Metalomarão are designed and built for tertiary and quaternary applications. They can be Gravelers which have excellent cubicity performances of materials and Sandmaker presenting great performances in the production of sand from gravels.

It is important to mention that does not exist only one grading curve for these crushers, these depend on various factors: first, the type of material to be treated, secondly, the feeding size, third rotor rotational speed and aperture of the crusher.

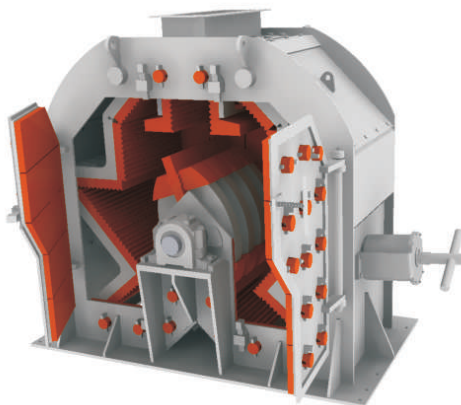
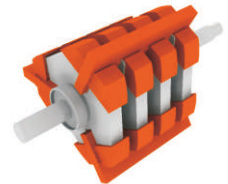
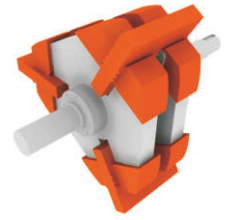


IMPACT CRUSHERS Terciary/Quaternary

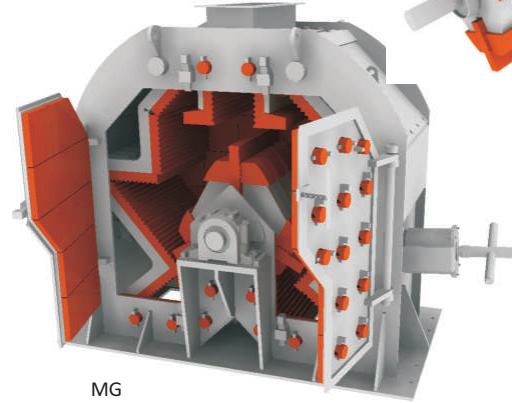


CRUSHERS	Impact Bars	Rotation Direction	RPM Máx.	Power (kW)	Granulometry Máx. (mm)	Production (t/h)	Weight (kg)
MA.90.35	2	2	1400	90	40 - 60	60	5200
MA.90.70	4	2	1400	160	40 - 60	120	7400
MG.90.35	3	2	1100	90	50 - 70	60	5300
MG.90.70	6	2	1100	132	50 - 70	120	7500

Notes: Other measures on request.
Values of production dependent of material.



MA



MG



METALOMARÃO
Equipamentos para a indústria extrativa, S.A.

Rua de Mem Gundar, nº1048
Apartado 78
4600-642 Gondar - Amarante | Portugal

T +351 255 420 580
F +351 255 420 589

geral@metalomarao.pt
www.metalomarao.pt

GPS: Latitude: 41°15'14.93"N
Longitude: 8° 1'56.22"W

E01|Data:2015.09