

LOG WASHERS

The Log Washers Metalomarão are characterized by its efficiency, functionality, robustness, ease of operation and maintenance.

They are indicated for the washing of thick materials with a high clay content, due to forced friction and continued generated by the two axes, removes earth and clay contained in inert.

Two geared motors that rotate in opposite directions, with a transmission pinion and crown guarantee the synchronism of the shafts.

The blades are constructed in anti-wear with adjustment and the possibility of reversal of the same material to ensure the optimization of its longevity.

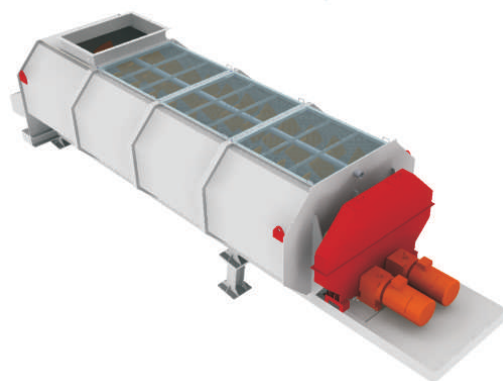
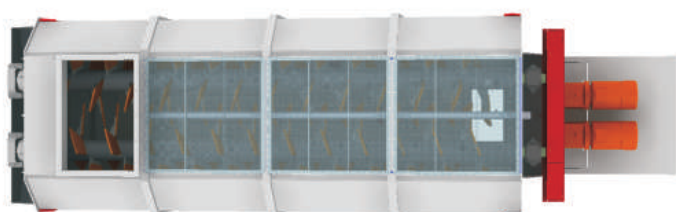
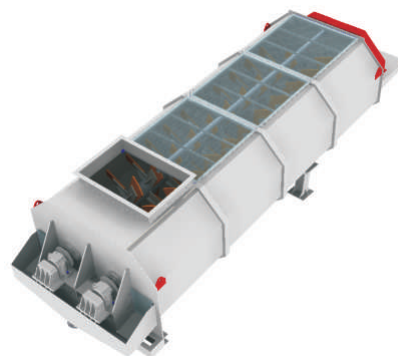
LOG WASHERS



LOG WASHERS	Length (mm)	Width (mm)	Nº Shafts	H ₂ O Required (m ³ /h)	Speed (rpm)	Power (kW)	Production (t/h)	Weight (kg)
LW.60.24	6000	2400	2	35 – 100	24 – 28	2x22	100 – 150	10000
LW.60.28	6000	2800	2	50 – 100	26 – 30	2x30	150 – 200	16500

Notes: Other measures on request.

Values of production dependent of material.



METALOMARÃO
Equipamentos para a indústria extrativa, S.A.

Rua de Mem Gundar, nº1048
Apartado 78
4600-642 Gondar - Amarante | **Portugal**

T +351 255 420 580
F +351 255 420 589

geral@metalomaraao.pt
www.metalomaraao.pt

GPS: Latitude: 41°15'14.93"N
Longitude: 8° 1'56.22"W

E01|Data:2015.09

The Metalomarão reserves the right to change characteristics without notice and without any liability. The information included is valid at the edition date of this document